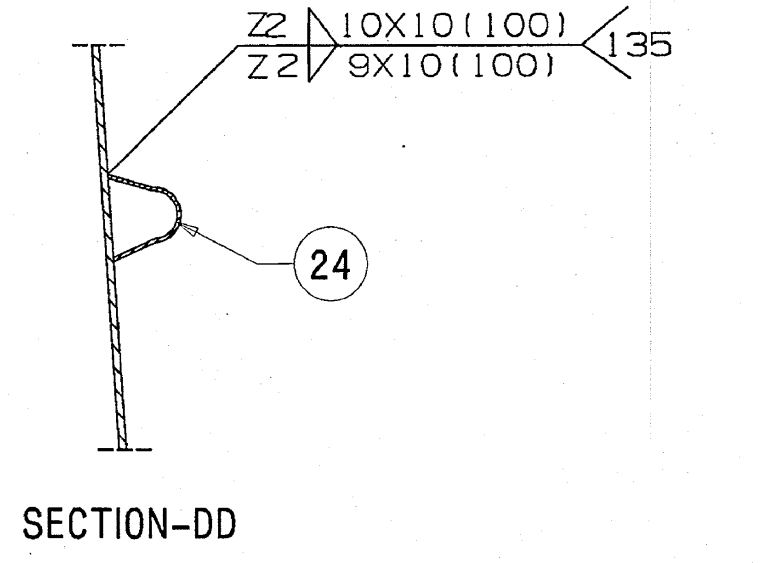
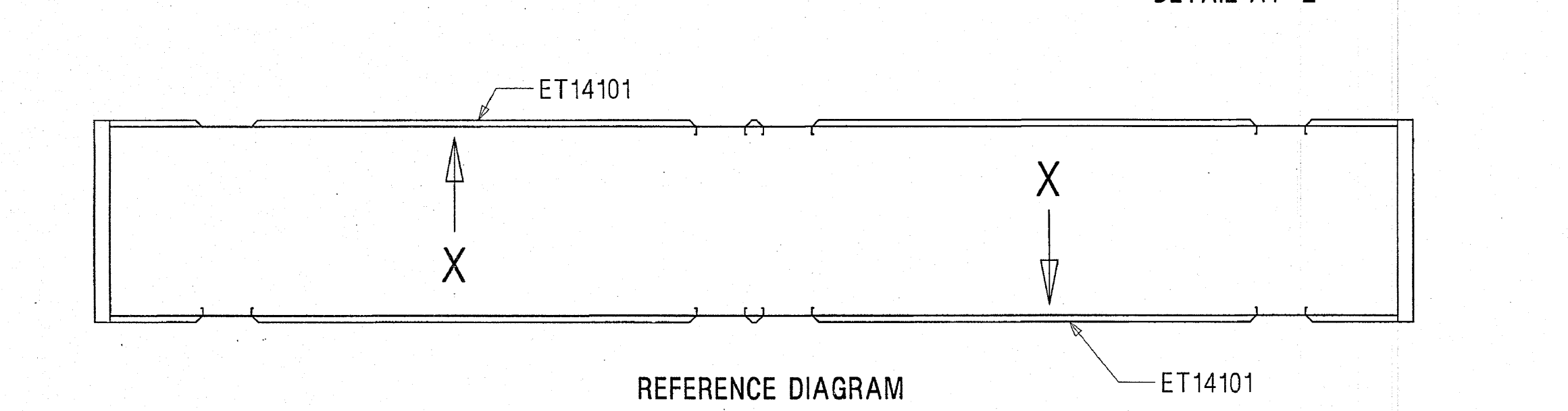
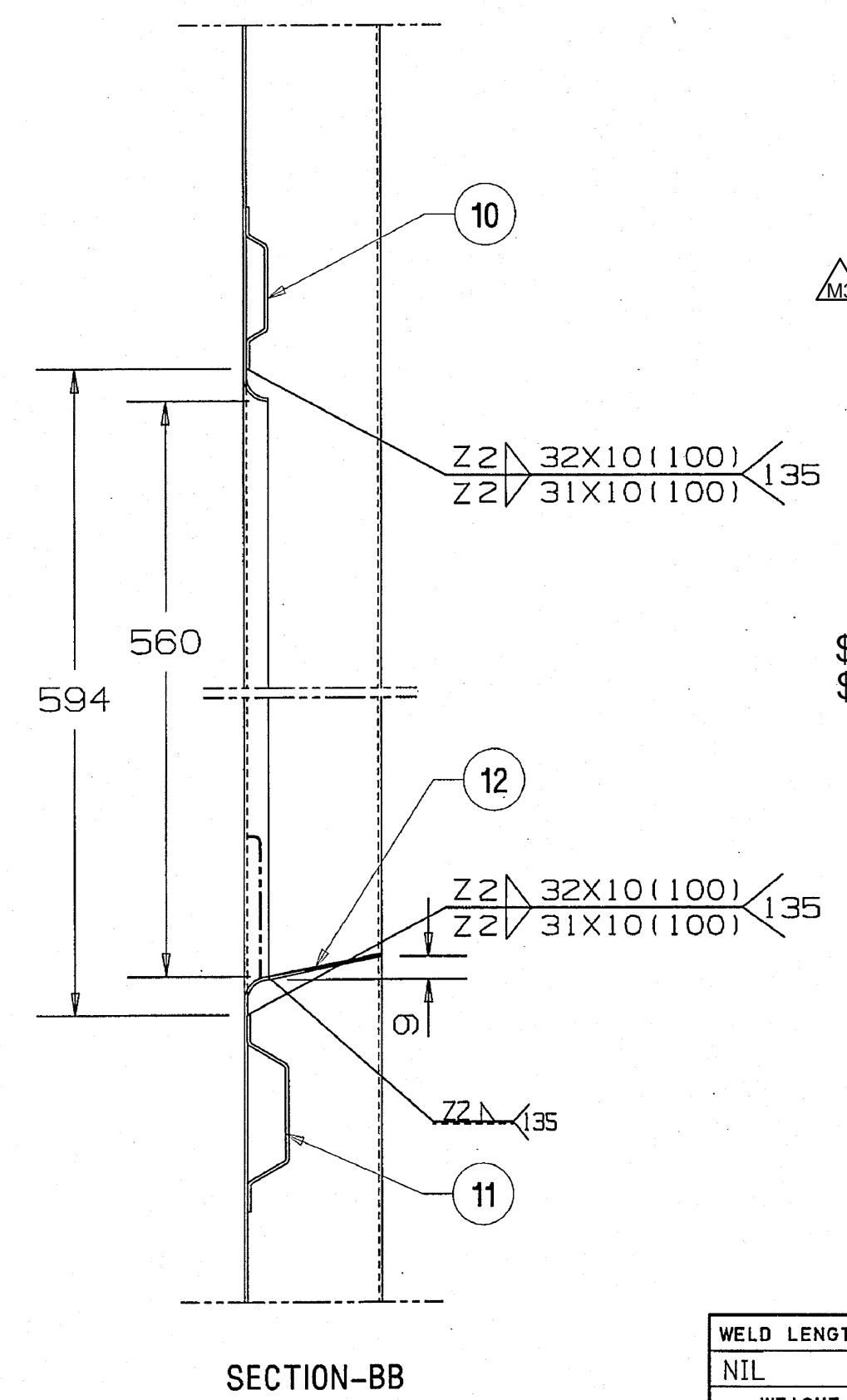
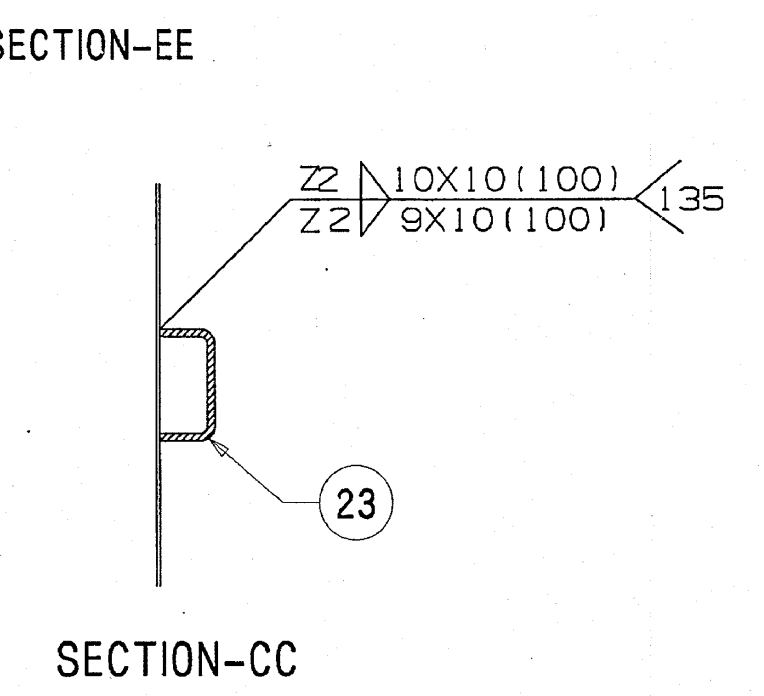
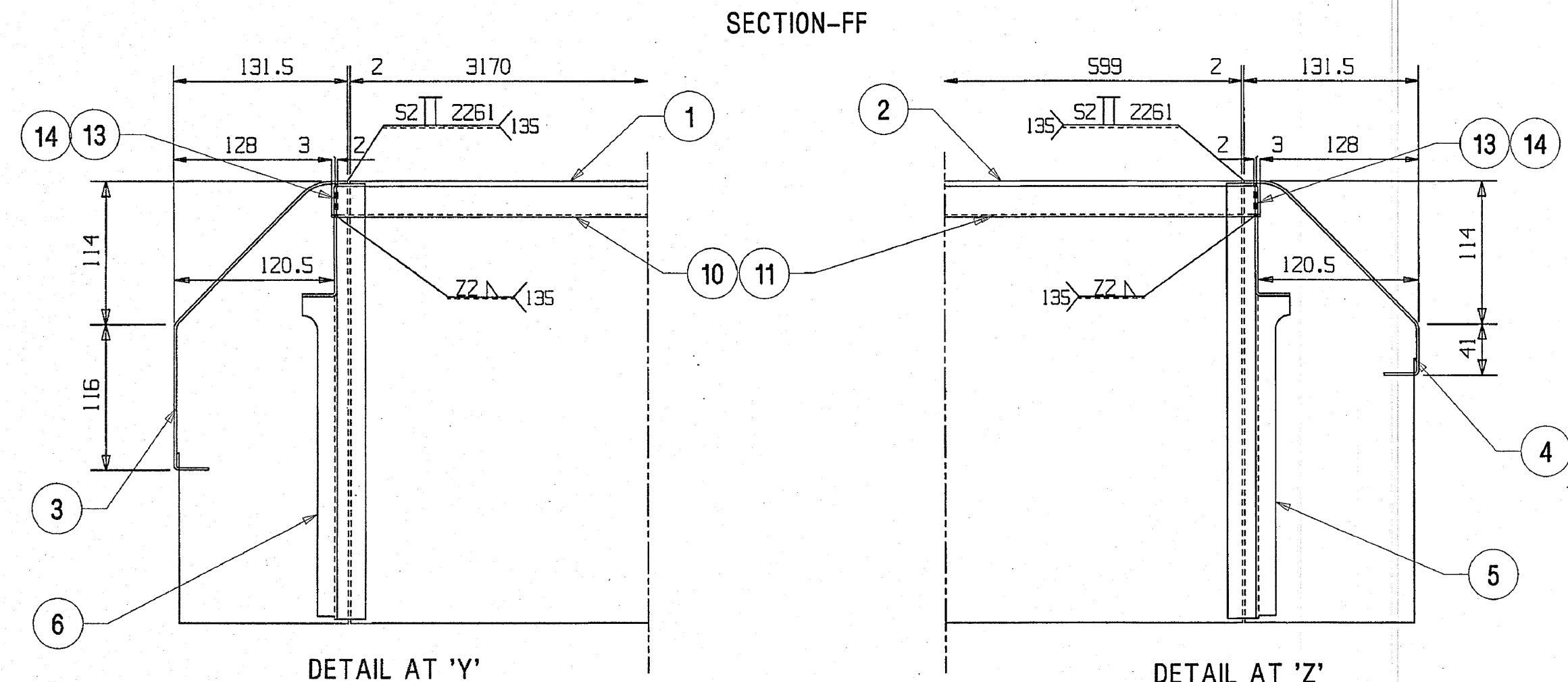
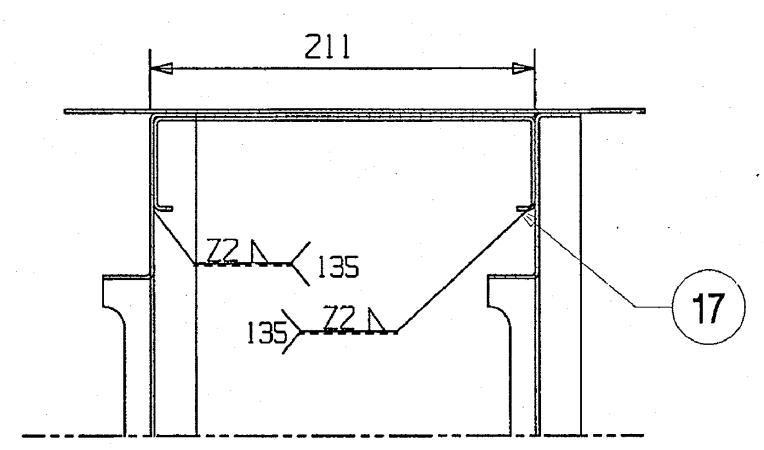
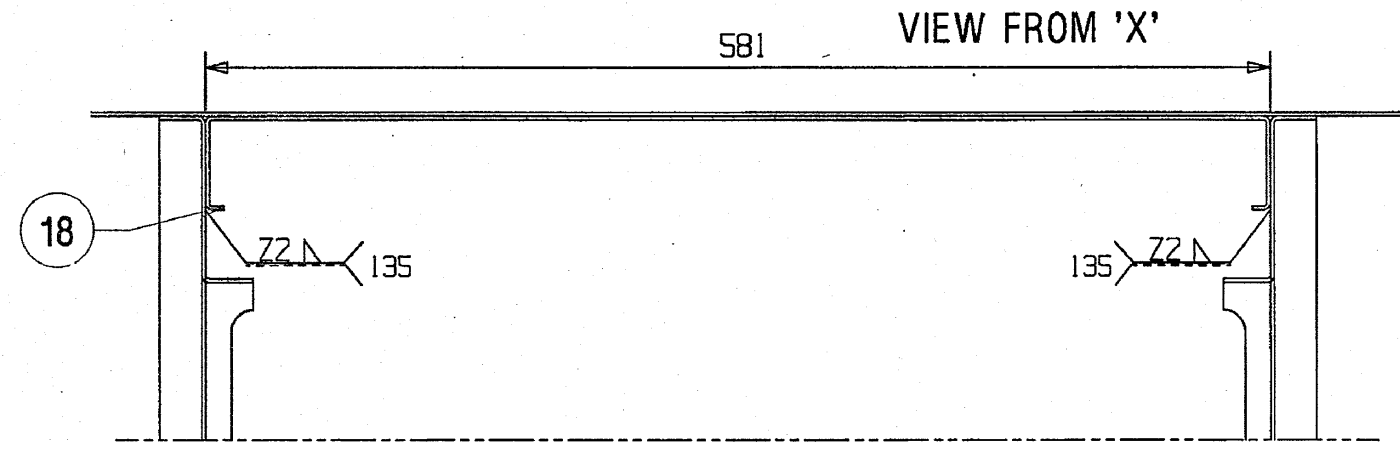


NOTE:

- 1. WELDING AS PER GENERAL PRACTICE.
- 2. WHEREVER TOLERANCE FOR DIMENSIONS NOT GIVEN OPEN TOLERANCE TO DRG No. ICF/STD-9-0-001 IS APPLICABLE.
- * 3. FOR OUTSOURCED SIDE STRUCTURE, INSIDE OF SIDE WALL ASSY & INTERMEDIATE PARTS TO BE GOLD PHOSPHATED AND APPLY ONE COAT OF RED OXIDE ZINC CHROMATE PRIMER TO IS-2074-92, EXCLUDING STAINLESS STEEL AREA (PILLARS).
- # 4. THE OUTSIDE SKIN SHOULD BE DEGREASED & DERUSTED.
- \$ 5. ITEM-17 & 18 TO BE PLUG WELDED WITH SIDE WALL SKIN.
- 6. SKIN TENSIONING OF THE SIDE WALL SHALL ALSO BE CARRIED OUT THAT VARIATION FROM PROFILE OF MAXIMUM 1mm PER METER LENGTH OF THE SIDE WALL IS ACHIEVED.
- 7. ALL SIDE WALL SHEET (SKIN) WELDED JOINTS SHOULD BE LEAK PROOF AND SHALL BE TESTED AFTER SIDE WALL ASSY. BY APPLYING CHALK POWDER ON ONE SIDE AND KEROSENE OIL ON THE OTHER SIDE.

THIS DRAWING IS ONLY FOR OUTSOURCING.



ITEM	DESCRIPTION & DIMENSIONS	QTY	DETAIL DRG	MATL. & SPEC.	REMARKS
28	STIFFENER	4	CC14466-17		
27	BOTTOM SIDE WALL SHEET	1	ET14163	NIL	NIL
26	HORIZONTAL STIFFENER	2	CC14531 -02	NIL	L=968
25	HORIZONTAL STIFFENER	3	CC14466 -01	NIL	L=968
24	HORIZONTAL STIFFENER	8	CC14531 -01	NIL	L=952
23	HORIZONTAL STIFFENER	8	CC14466 -02	NIL	L=952
22	HORIZONTAL STIFFENER	6	CC14531 -03	NIL	L=580
21	HORIZONTAL STIFFENER	7	CC14466 -04	NIL	L=580
20	HORIZONTAL STIFFENER	2	CC14531 -04	NIL	L=185
19	HORIZONTAL STIFFENER	2	CC14466 -05	NIL	L=185
18	PILLAR STIFFENER	2	ET14125	NIL	NIL
17	PILLAR STIFFENER	1	ET14124	NIL	NIL
16	BOTTOM SIDE WALL SHEET	1	ET14161	NIL	NIL
15	BOTTOM SIDE WALL SHEET	1	ET14160	NIL	NIL
14	CLOSING PLATE FOR WAIST RAIL	2	CC14146	NIL	NIL
13	CLOSING PLATE FOR LIGHT RAIL	2	CC14145	NIL	NIL
12	WINDOW SEALING ARRST.	4	FC-1-4-048	NIL	COL - I
11	WAIST RAIL	1	CC14465 -01	NIL	L=6950
10	LIGHT RAIL	1	CC14464 -07	NIL	L=6950
9	BODY PILLAR R.H. ABOVE LIFTING PAD CUTOUT	2	ICF/STD-1-4 -019	NIL	COL - IV
8	BODY PILLAR L.H. WITH BACK PIECE	4	ET14119	NIL	NIL
7	BODY PILLAR R.H. WITH BACK PIECE	2	ET14118	NIL	NIL
6	BODY PILLAR L.H. WITH STIFFENER	1	ET14121	NIL	NIL
5	BODY PILLAR R.H. WITH STIFFENER	1	ET14120	NIL	NIL
4	DOOR CORNER SHEET	1	ET14123	NIL	NIL
3	DOOR CORNER SHEET	1	ET14139	NIL	NIL
2	SIDE WALL SHEET	1	ET14106	NIL	NIL
1	SIDE WALL SHEET	2	ET14105	NIL	NIL

WELD LENGTH	ITEM	DESCRIPTION & DIMENSIONS	QTY	DETAIL DRG	MATL. & SPEC.	REMARKS
NIL	M	SIDE WALL				
WEIGHT	FILE	\\et14101a.prt (2D)				
355.00	KG	SIDE WALL ASSEMBLY COMPARTMENT AREA FOR MEMU TRAILER COACH				
S. AREA		RAIL COACH FACTORY, KAPURTHALA				
NIL	M ²	REF.DRG.Nr. MEMU/TC2-1-4-202 COL-1				
LENGTH/B*H		PL NO. 05046373				
7.206	M	DRG.NO. ET14101				
WIDTH/H*THICK.		ADE/SME				
NIL	M	BY.CME				
HEIGHT		CODE				
2.284	M	ALT. α				

THIS DRAWING IS THE INTELLECTUAL PROPERTY OF RAIL COACH FACTORY, KAPURTHALA. THIS DRAWING SHOULD NOT BE REPRODUCED, ALTERED, USED FOR MANUFACTURING OF COMPONENTS, SOLD OR TRANSFERRED WITHOUT PERMISSION FROM CHIEF DESIGN ENGINEER, RAIL COACH FACTORY, KAPURTHALA.

ANY MANUAL ALTERATION SHALL AUTOMATICALLY RENDER THIS DRAWING INVALID. FOR UNTOLERANCED DIMENSIONS REFER MDG0008

DETAIL DRGS STARTING WITH "LI" ARE INTERNAL REFERENCE LISTS ONLY AND ARE NOT FOR ISSUE.

DATE OF FIRST ISSUE 12/11/1999 CGM BY